

# Garfield Avenue Site Cleanup Full Excavation Plan Public Meeting

November 1, 2011  
6:30 p.m.

Mary McLeod Bethune Life Center  
140 Dr. Martin Luther King Jr. Drive  
Jersey City, N.J.

**Chromium Cleanup**  
Partnership

N.J. DEPARTMENT OF ENVIRONMENTAL PROTECTION  
CITY OF JERSEY CITY  
PPG INDUSTRIES  
COURT-APPOINTED SITE ADMINISTRATOR

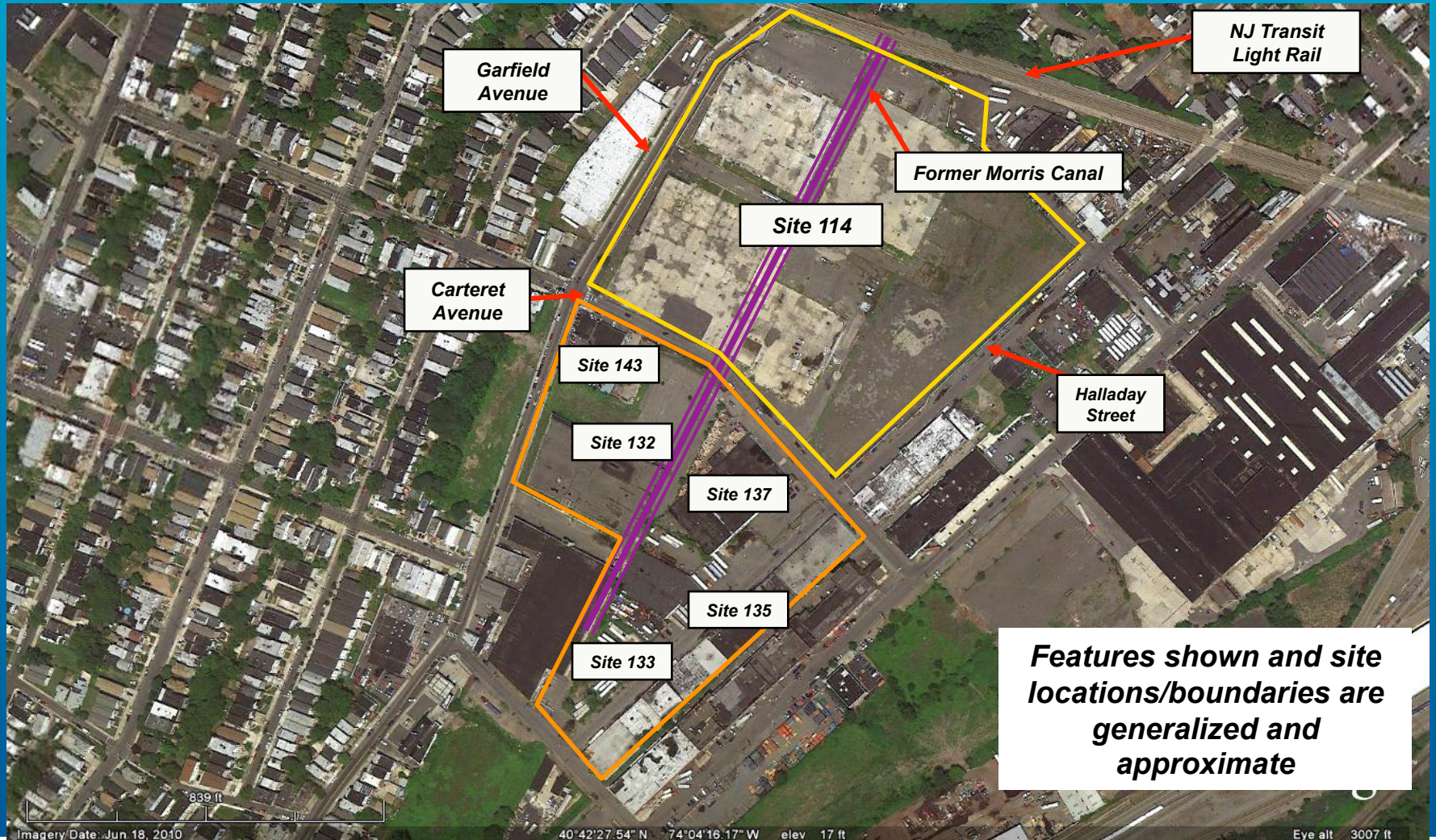
# Meeting Overview

- **Welcome / Introduction**
- **Cleanup Activity to Date**
- **Next 7 Months - Cleanup Plans**
- **PSE&G MGP Site Cleanup**
- **Berry Lane Park Cleanup**
- **Blood Results / Air Quality**
- **Residential Inspection Program**
- **General Q&A – 10 Minutes**
- **Open Information Session**

# Welcome / Introduction

- **Remarks - Mayor Healy**
- **Remarks - Deputy Mayor Tayari**
- **Program Format**
- **Mayor's Citizens Advisory Board – Markis Abraham**
- **Presentation – Site Administrator Mike McCabe**
  - **Site Overview**
  - **Recap Full Excavation Approach – “Dig it up. Haul it away.”**

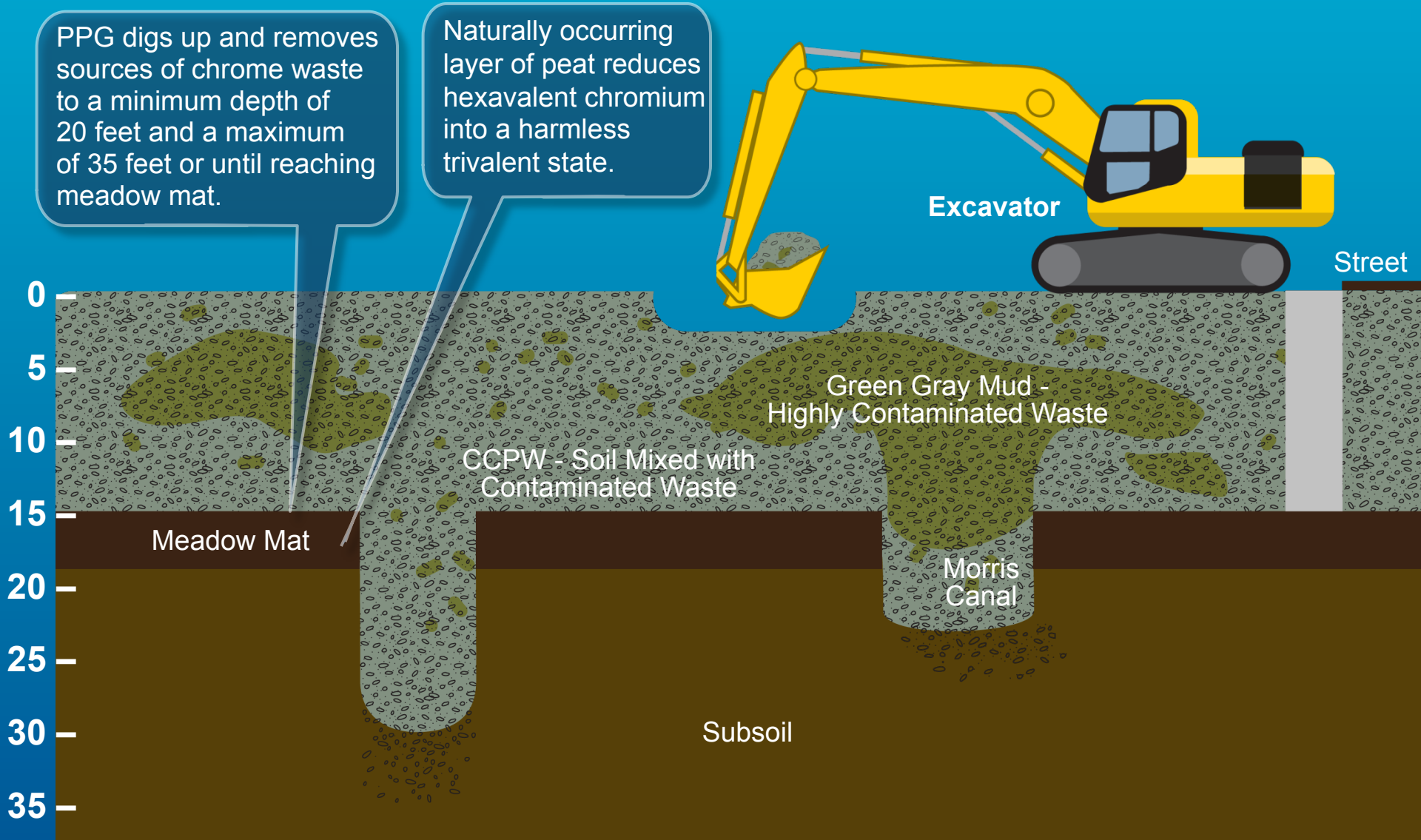
# Garfield Avenue Group Sites



# Garfield Avenue Full Excavation Plan

PPG digs up and removes sources of chrome waste to a minimum depth of 20 feet and a maximum of 35 feet or until reaching meadow mat.

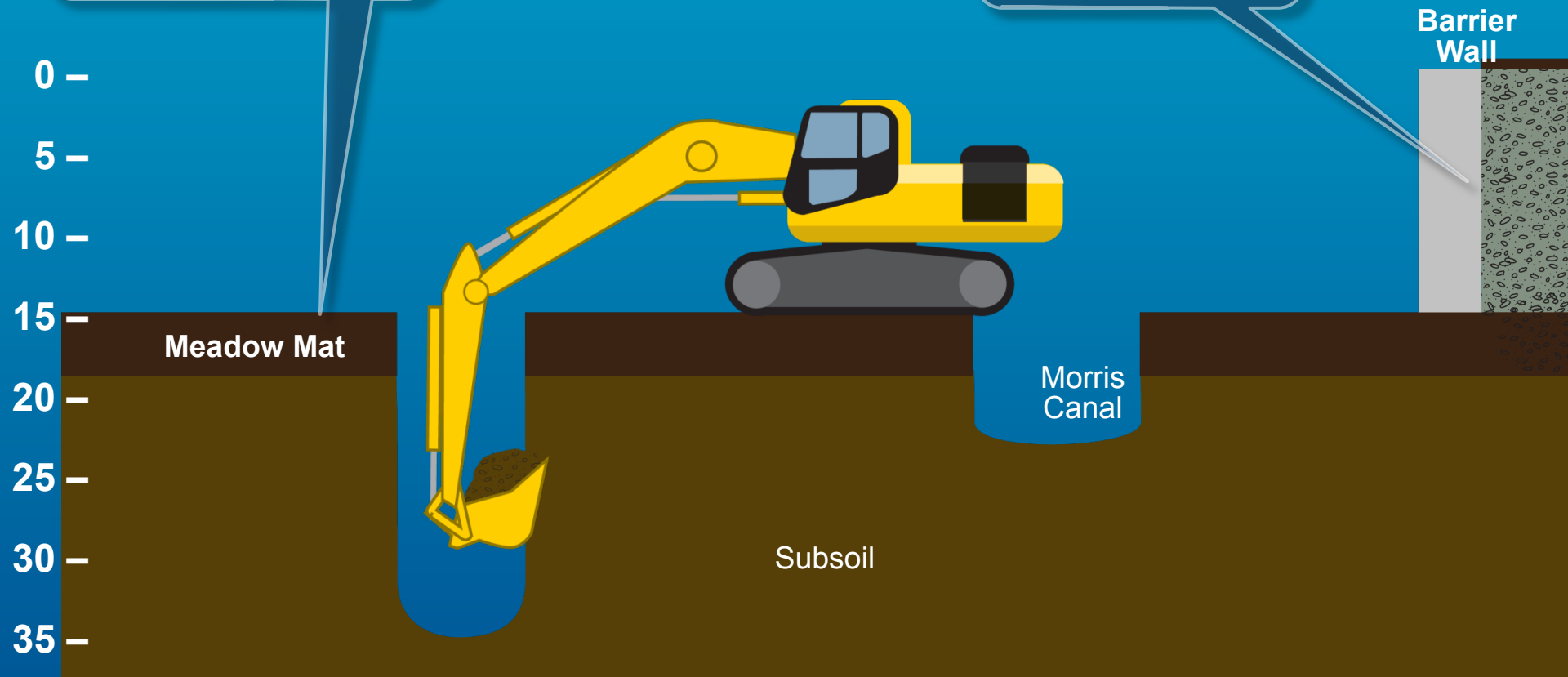
Naturally occurring layer of peat reduces hexavalent chromium into a harmless trivalent state.



# Garfield Avenue Full Excavation Plan

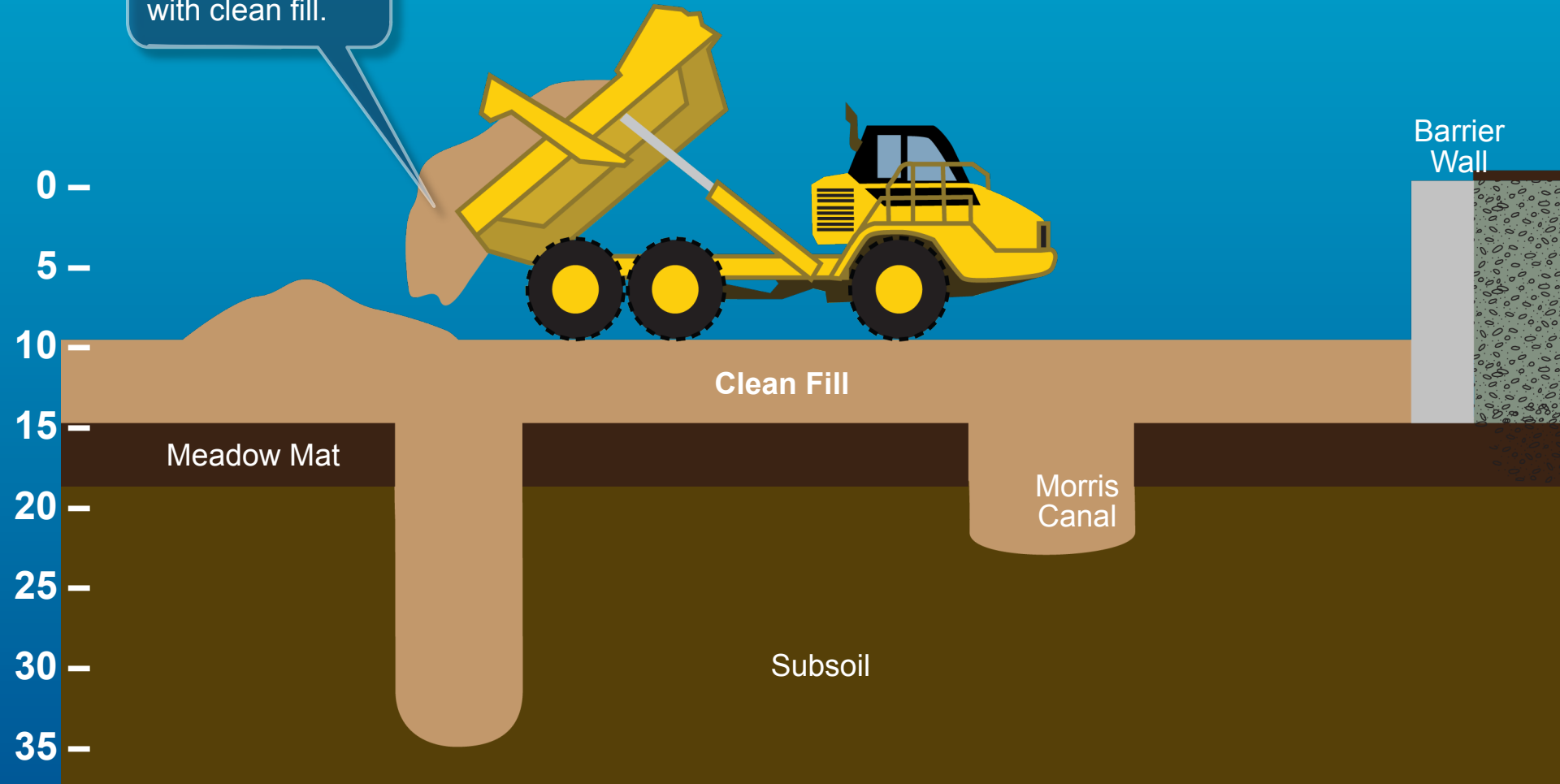
PPG digs up and removes sources of chrome waste to a minimum depth of 20 feet and a maximum of 35 feet or until reaching meadow mat.

Inaccessible waste under streets and light rail will be isolated and/or treated.



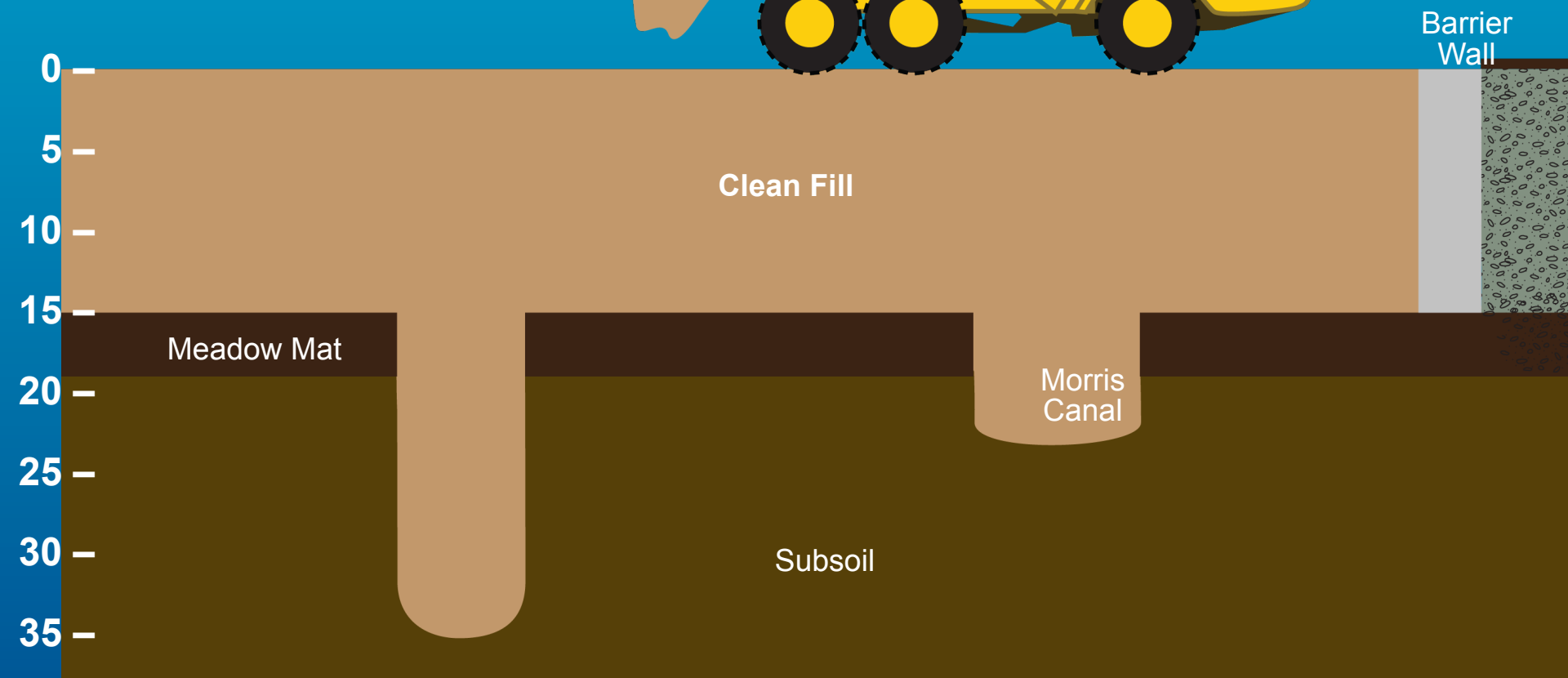
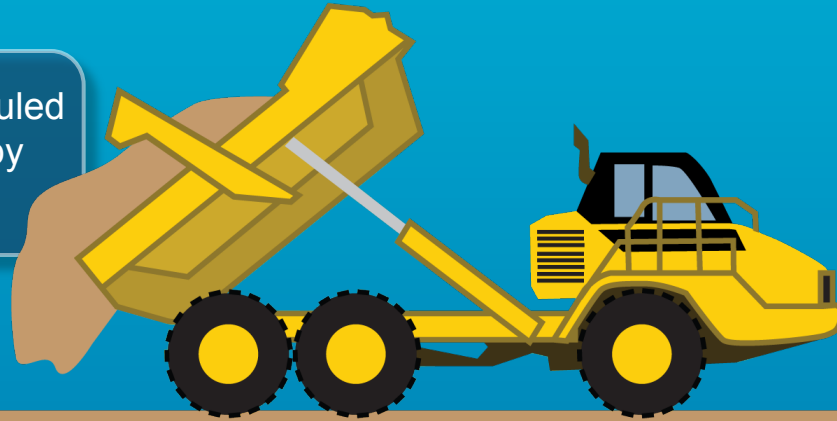
# Garfield Avenue Full Excavation Plan

PPG replaces excavated waste with clean fill.



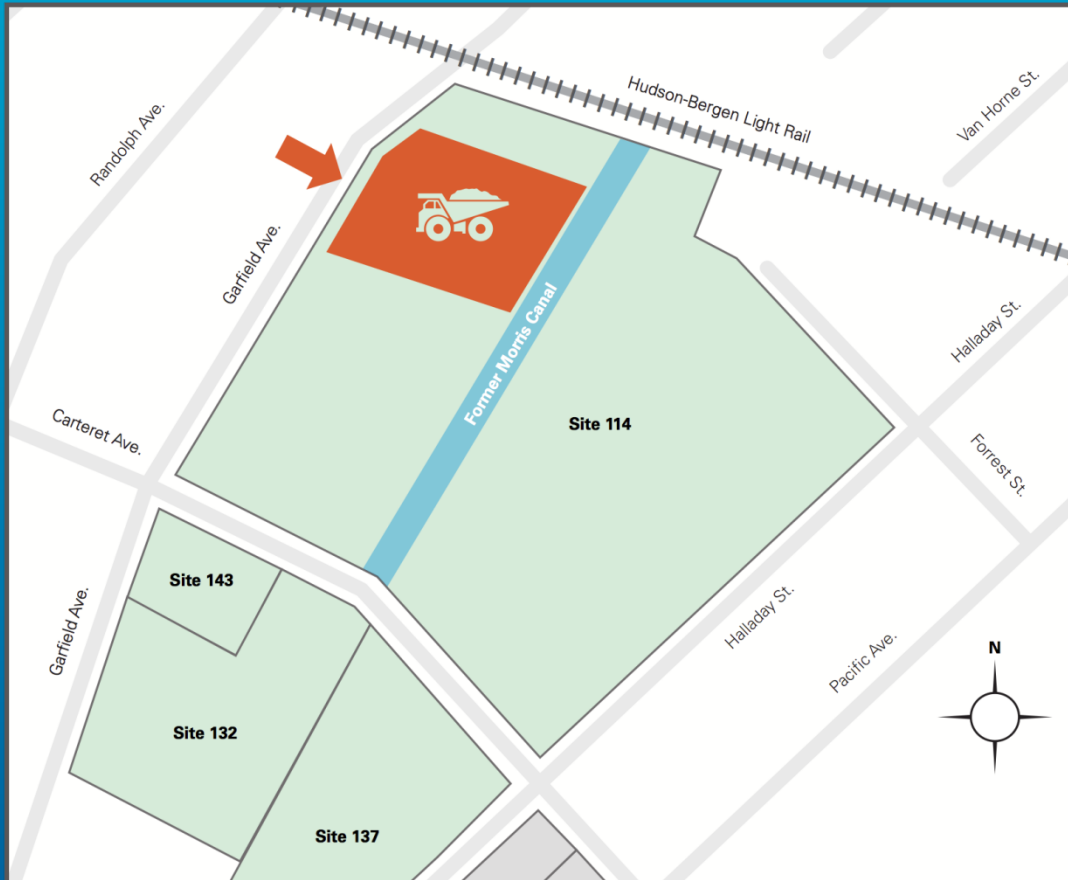
# Garfield Avenue Full Excavation Plan

Cleanup is scheduled to be completed by end of 2014.



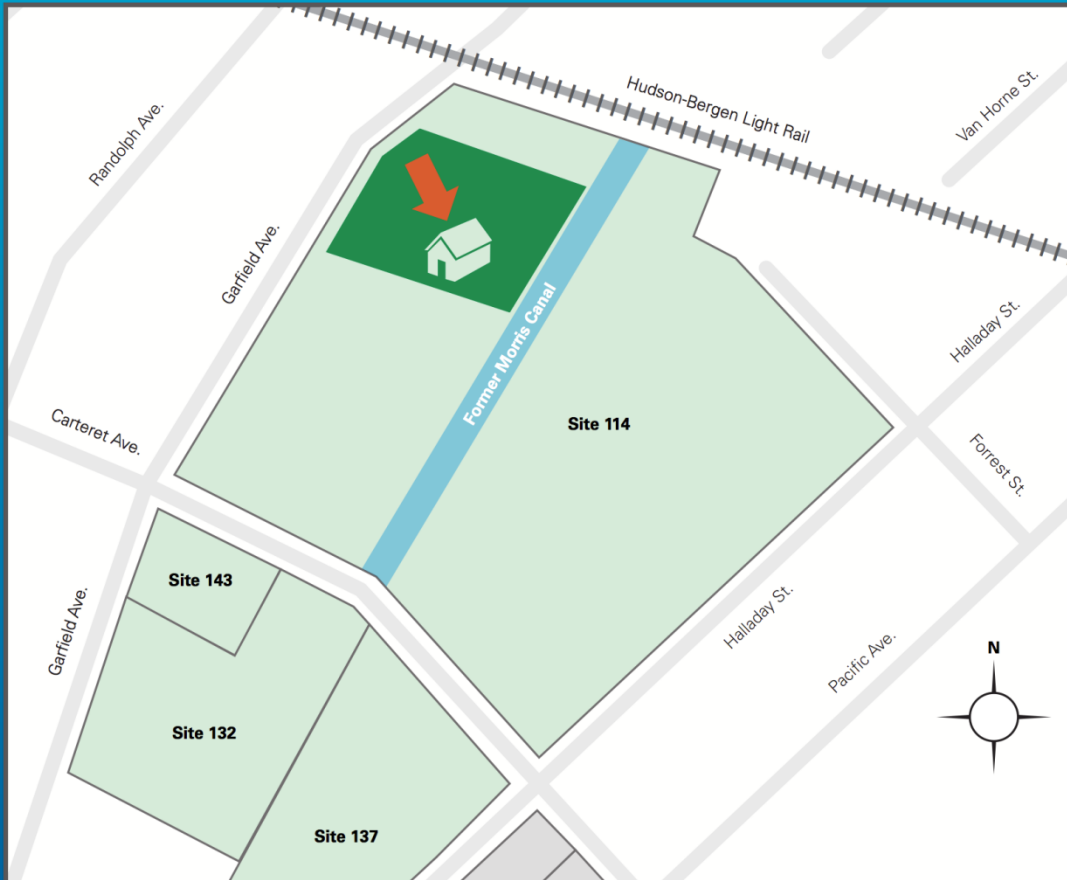


# Phase 1: 10% Cleanup Complete



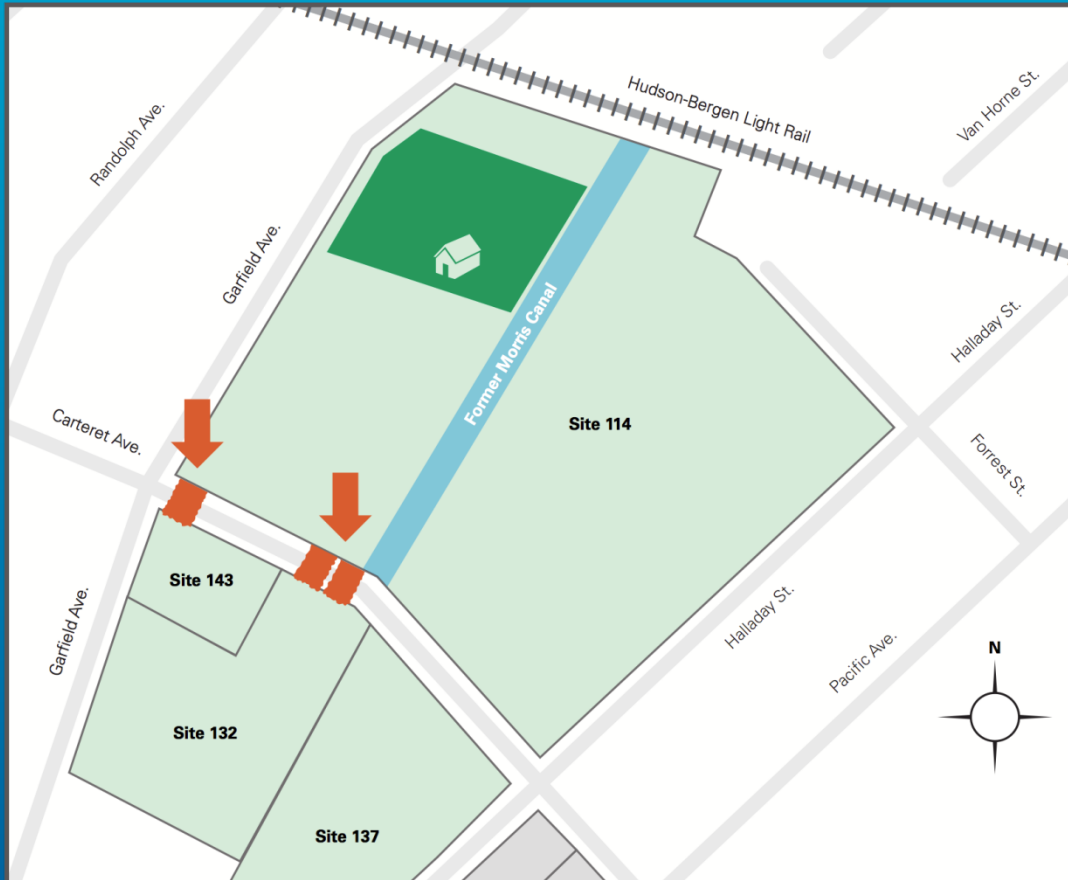
- Work conducted from July 2010 to June 2011
- 72,800 tons of material removed, including highly contaminated “Green-gray mud”
- Backfilled with clean fill

# Water Treatment System



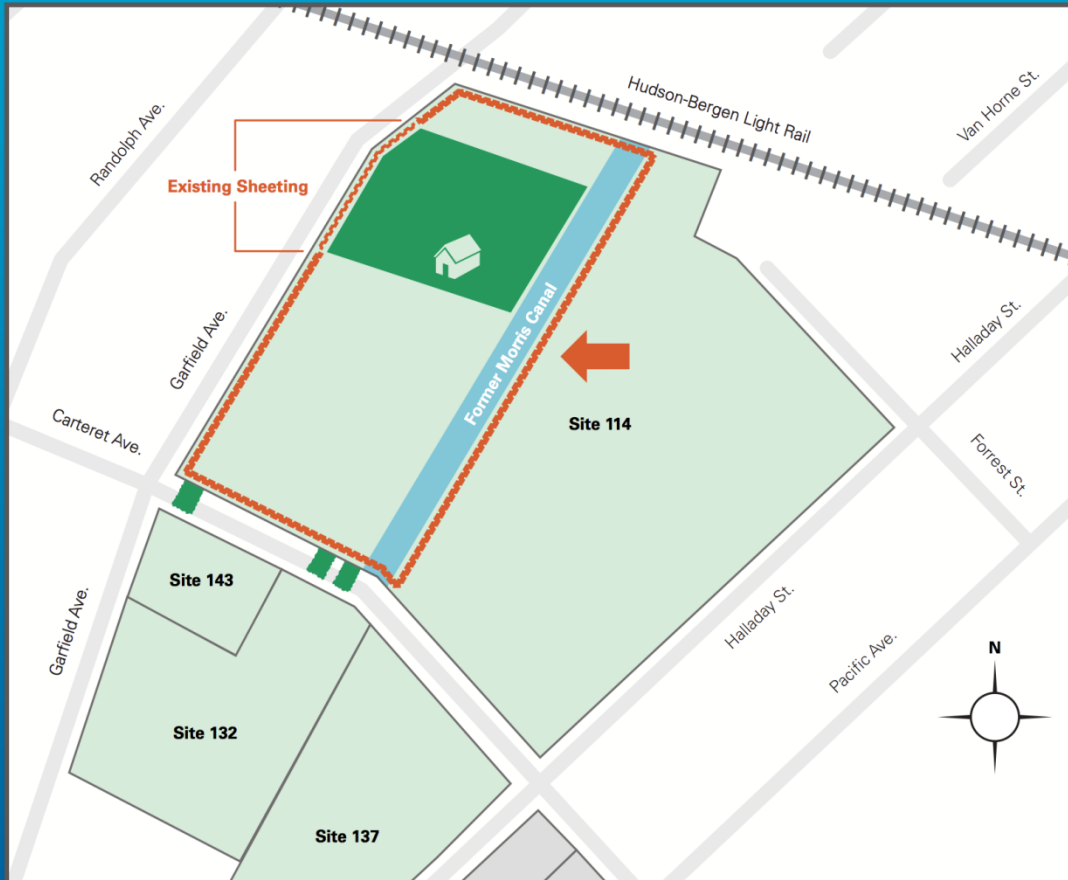
- Start up – 11/15
- Will decontaminate water on site from excavation instead of trucking off-site
- Will accelerate excavation
- Clean water will be piped to local sewer system under required permits

# Locating Buried Utilities



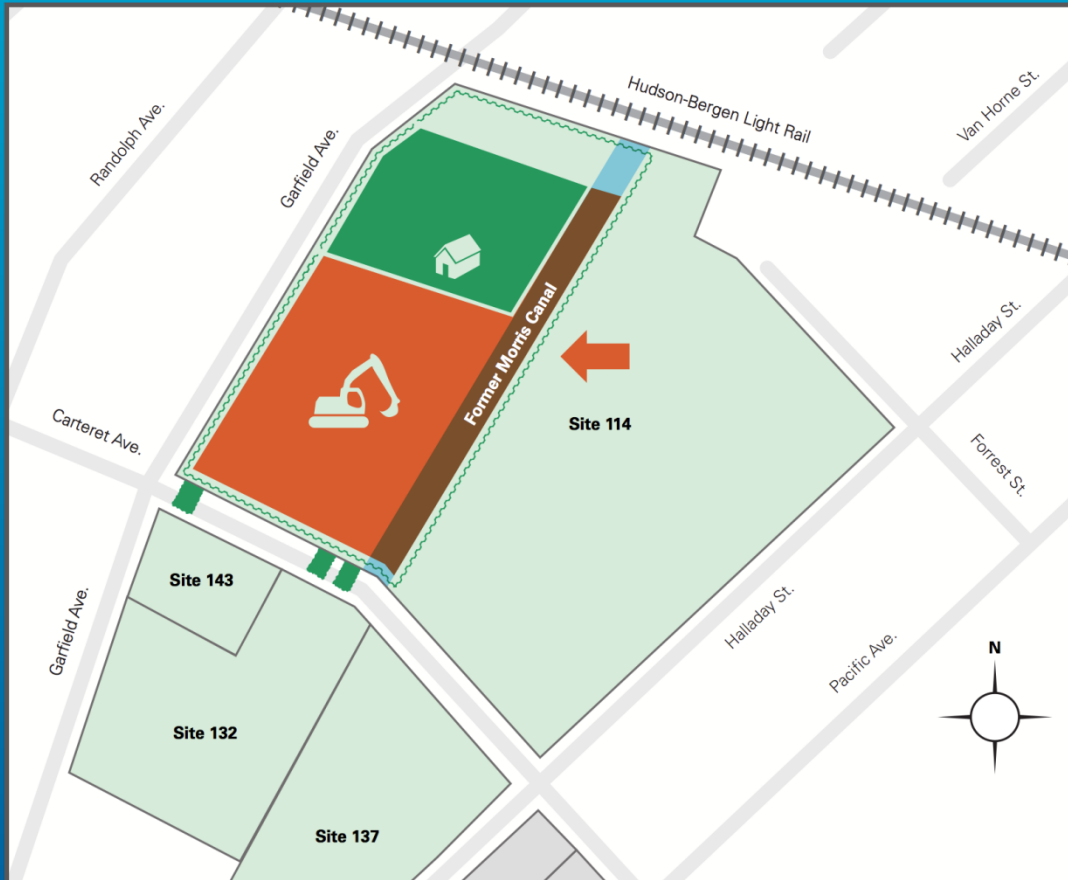
- Sewer, water, gas, and electric utilities buried under Carteret Ave. - old maps incomplete
- Precise, limited digging under way to locate utilities before extensive excavation

# Sheet Piling Installation



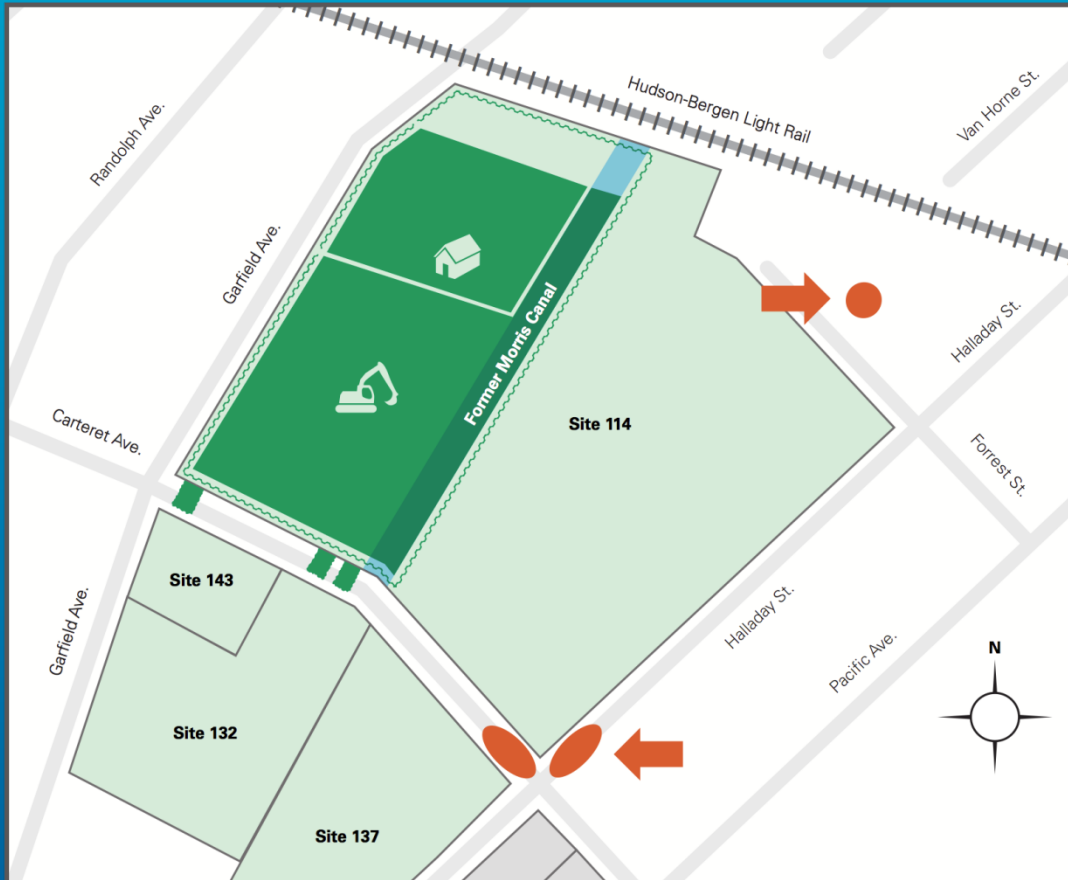
- Steel sheets are driven deep into the ground to manage excavation and contain groundwater
- Sheet piling already installed along Garfield Avenue for initial excavation
- Second Phase sheet piling to start 11/28

# Phase 2 Excavation: 25%



- Work starts in January
- Scheduled to be complete by midyear next year
- When finished, 25% of excavation will be complete – ahead of original Master Schedule

# Off-Site Flooding Response



- Hurricane and record rainfall raised groundwater table
- Immediate inspection revealed suspect contamination and precautionary cleanup was conducted
- Testing revealed contamination
- Additional measures underway to limit groundwater impact

# Residential Inspections



- Flooding affected Van Horne St. residences, but floodwater samples found no chromium contamination
- Soil testing being conducted under Residential Inspection Program

# Residential Inspections



- Residences on Halladay St. were not affected by nearby flooding, but water tested as a precautionary measure
- Water samples found no chromium contamination
- Further soil testing being conducted under Residential Inspection Program

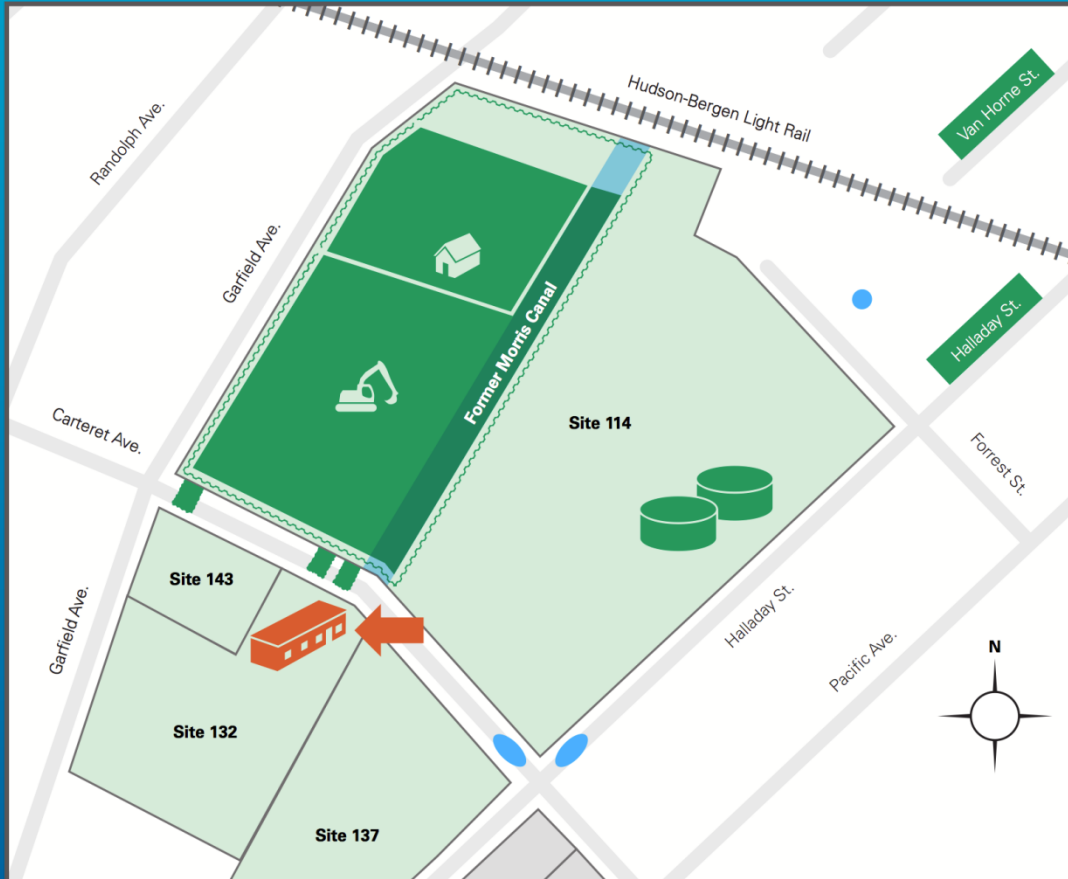


# Former Manufactured Gas Plant



- Operated from 1886 to 1911
- Byproduct coal tar contaminated east side of site
- PSE&G is responsible for cleanup
- PSE&G has successfully cleaned up other MGP sites
- Cleanup scheduled to be complete in 2014

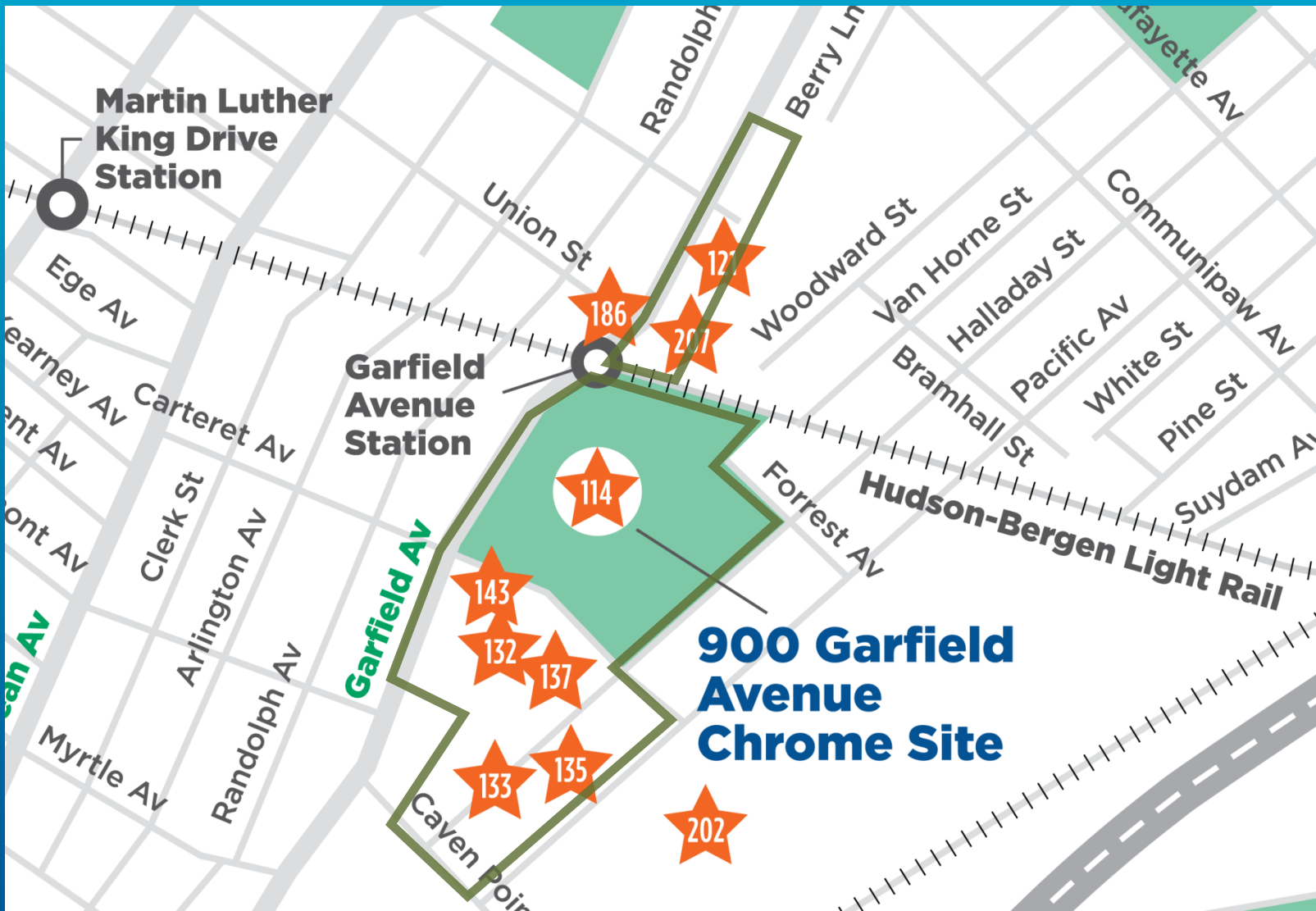
# Public Information Center



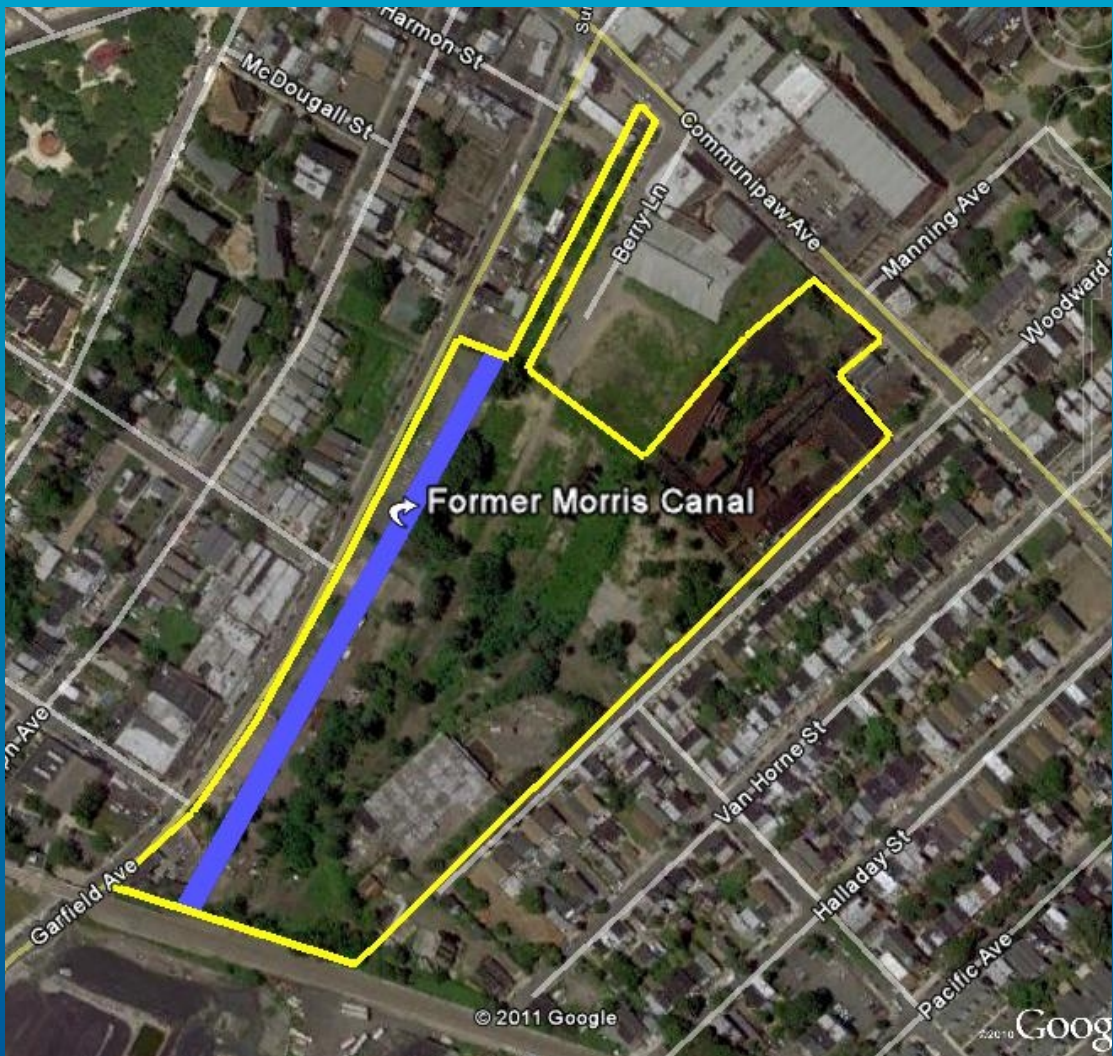
- Re-opening in early November on Carteret Avenue
- Relocated from 334 MLK Drive storefront
- Hours are 10 a.m. to 2 p.m. Tuesdays and Thursdays, and by appointment
- Contains maps and other documents about cleanup sites



# 900 Garfield Ave. and Berry Lane



# Berry Lane Park



- Acquisition, relocation, and demolition
- Environmental Investigations
- Remediation Plan
- Remediation Schedule
- Park Development

# Update

- Blood Sampling 2 – No Detection
- Second round of blood samples were taken from 36 residents living near the Garfield Avenue site who had previously participated
- As in Round 1, results showed that there were no detectable levels of chromium that would indicate exposure to contaminated waste
- Exposure no different from other urban areas without chromium sites
- Samples analyzed by independent, certified laboratory
- Program administered by EOHSI
- Round 3 will occur Spring 2012

# Update

- Exposure Prevention/Air Monitoring
- Dust and hexavalent chromium levels stayed well below DEP-approved air-quality limits
  - Air monitoring conducted 24/7
  - Two full-time air monitoring technicians on site
- Multiple prevention and protection plans
  - Dust Control, Air Monitoring, Traffic Safety and Control, Site Health & Safety

# Residential Inspection Program

- No chromium waste found to date
- Inspected homes by the numbers:

Total Requests	77
Eligibility Determination	1
Outside Program Area	9
Records Search Reports	62
Signed Access Agreements	26
Inspections Conducted	20
Sampling Conducted	9

As of October 11, 2011



# Q&A

# How to Reach Us

- **Phone:** 201-777-2099
- **E-mail:** [Info@chromecleanup.com](mailto:Info@chromecleanup.com)
- **Mail:** Chromium Cleanup Partnership  
P.O. Box 15981  
Jersey City, N.J. 07305