

# PPG Sites Cleanup First Year Status Report

## Partial Consent Judgment Concerning PPG Chromium Sites

June 21, 2010

Site Administrator  
W. Michael McCabe

Tel. # 201-777-2099    [www.chromecleanup.com](http://www.chromecleanup.com)

**Chromium Cleanup**  
Partnership

N.J. DEPARTMENT OF ENVIRONMENTAL PROTECTION  
CITY OF JERSEY CITY  
PPG INDUSTRIES  
COURT-APPOINTED SITE ADMINISTRATOR

# Status Report Overview

- n Introduction
- n Settlement Review
- n Post-Settlement Activity
- n Initial Cleanup Work
- n Final Steps

# Settlement Overview

n On June 26, 2009, DEP, Jersey City and PPG signed a settlement in Superior Court where they agreed to work together to cleanup PPG's chromium sites.

n The agreement:

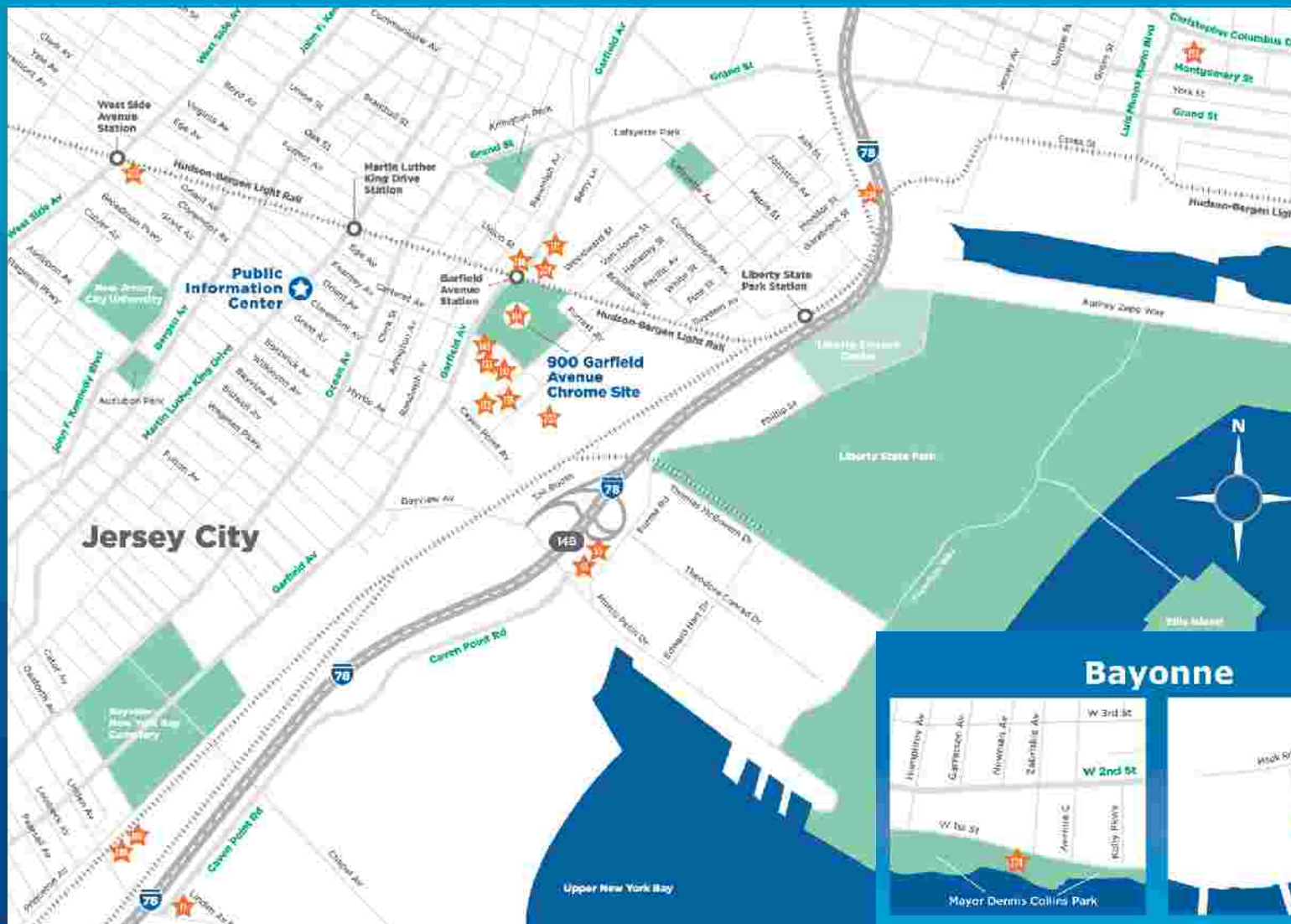
- § Established a 5-year goal to clean up all 20 sites;
- § Created new position of an independent, court-appointed Site Administrator;
- § Created new position of an independent Technical Consultant;

# Settlement Overview

n The agreement also:

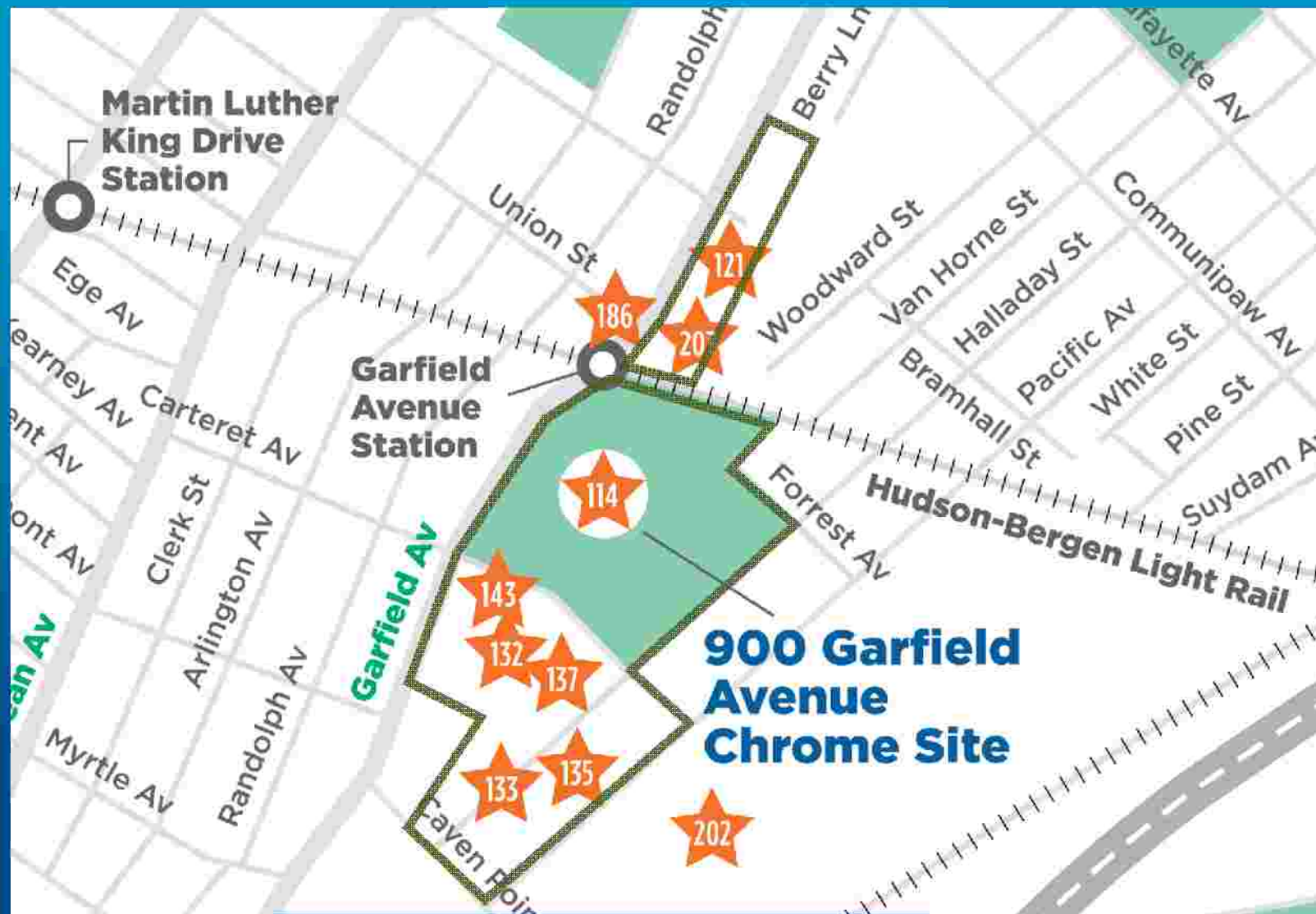
- § Established residential site inspection and cleanup program for chrome waste;
- § Directed the Site Administrator to review existing health studies, consult with experts and recommend further actions, if necessary;
- § Requires PPG to make reasonable efforts to hire 20% of its cleanup workforce from Jersey City and to establish a training program for City residents; and
- § Requires parties communicate activities with affected community.

# Cleanup Locations



**Chromium Cleanup**  
Partnership

# 900 Garfield and Berry Lane



# Post-Settlement Activity

- q **Settlement Entered - 6/26/09**

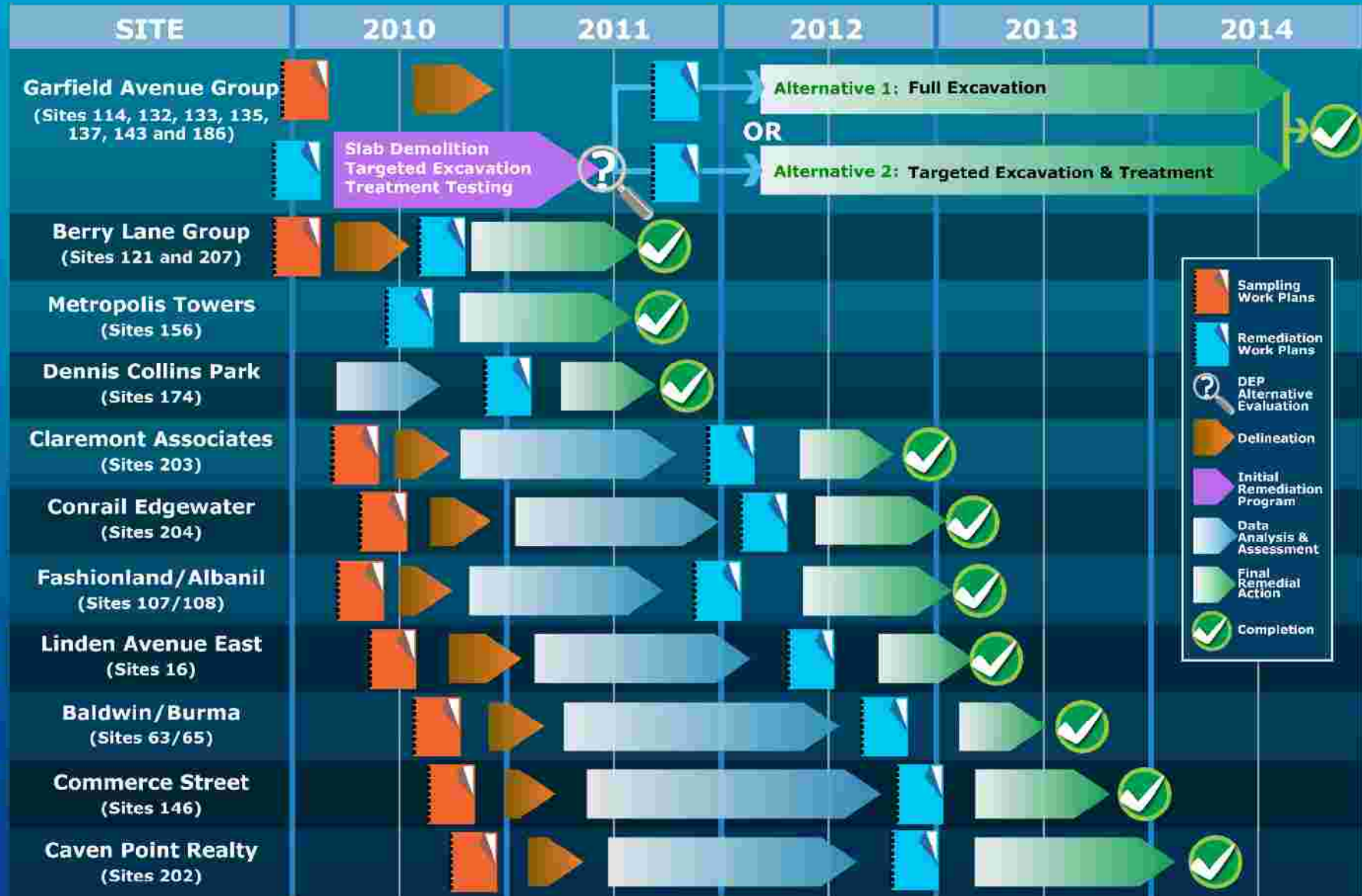
- q Independent Site Administrator - Appointed: 7/6/09
- q Independent Technical Consultant – On board: 10/26/10

- q **Master Schedule Cleanup Start Date - 12/1/2009**

- q 20 sites cleaned up by year-end 2014



# Master Schedule for PPG Chromium Sites



Start Date:  
December 1, 2009

**Chromium Cleanup**  
Partnership



# Post-Settlement Activity

- q **Settlement Entered - 6/26/09**

- q Independent Site Administrator - Appointed: 7/6/09
- q Independent Technical Consultant – On board: 10/26/10

- q **Master Schedule Cleanup Start Date - 12/1/2009**

- q 20 sites cleanup by year-end 2014

- q **Residential Inspection Program – Launch: 1/21/10**

- q 51 requests and responses in various stages of active implementation

# Residential Inspection Program Process



# Post-Settlement Activity

- q **Settlement Entered - 6/26/09**
  - q Independent Site Administrator - Appointed: 7/6/09
  - q Independent Technical Consultant – On board: 10/26/10
- q **Master Schedule Cleanup Start Date - 12/1/2009**
  - q 20 sites cleanup by year-end 2014
- q **Residential Inspection Program – Launch: 1/21/10**
  - q 51 requests and responses in various stages of active implementation
- q **Health Study Recommendations: 5/10**
  - q Strengthened community protection; established voluntary blood-testing program
- q **20% Jersey City Hiring Goal - Ongoing**
- q **Community Outreach - Ongoing**

# Post-Settlement Activity, cont'd

## Community Outreach - Ongoing

- n Maintain local phone number, answer inquiries
- n Update Web site - [www.chromecleanup.com](http://www.chromecleanup.com)
- n 6 public meetings in Nov., Dec., Jan., April, May, June
- n Mailed more than 20,000 information update letters
- n Mailed 2 newsletter reports to 4,500 residents
- n Distributed/mailed 30,000 postcards/fliers announcing meetings/contact info
- n Maintained PPG storefront and activities
- n Mayor established Citizen Advisory Board
- n Conducted small group outreach

# Work Beginning This Summer ... What to Expect

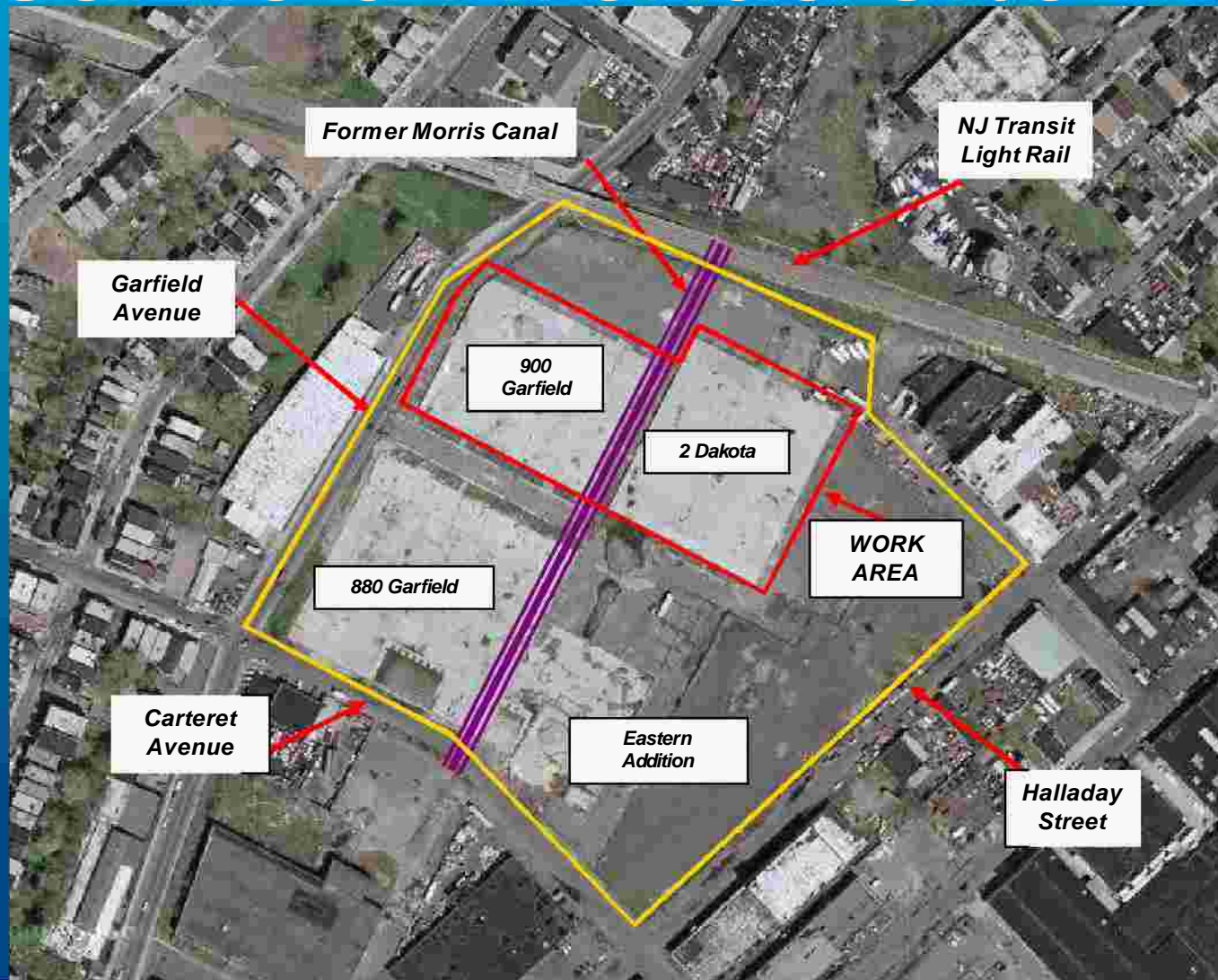
## **May-June 2010 (Site Preparation)**

- n On-site paving of truck routes
- n Utility pole installation / power distribution on-site
- n Additional construction trailers on-site
- n Air Monitoring Station installation

## **June 2010 – February 2011 (Excavation and Removal)**

- n Removal of highly contaminated waste begins
- n Heavy construction equipment on-site
- n High level of activity

# Garfield Avenue Site





# Work Beginning This Summer ... What to Expect

## **May-June 2010 (Site Preparation)**

- n On-site paving of truck routes
- n Utility pole installation / power distribution on-site
- n Additional construction trailers on-site
- n Air Monitoring Station installation

## **June 2010 – February 2011 (Excavation and Removal)**

- n Removal of highly contaminated waste begins
- n Heavy construction equipment on-site
- n High level of activity

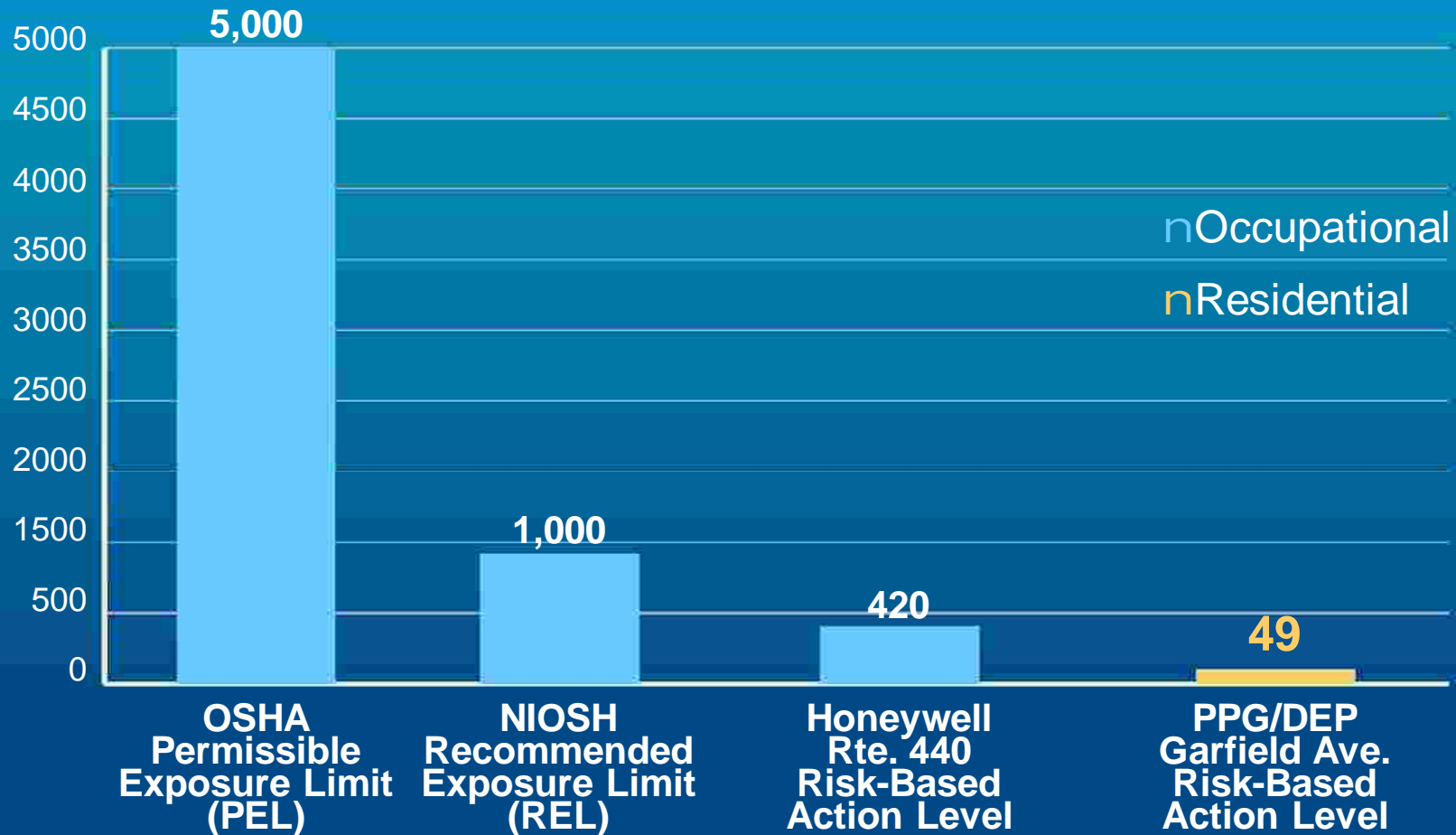
# Comprehensive Exposure Prevention Plans

- n Multiple, overlapping prevention and protection plans
  - n Dust Control Plan
  - n Air Monitoring Plan
  - n Traffic Safety and Control Plan
  - n Site Health & Safety Plan
  - n Community Exposure Prevention and Testing Program

# Locations for Air Monitoring Stations



# Comparison Air Exposure Limits, ng/m<sup>3</sup>



**Chromium Cleanup**  
Partnership

# Garfield Avenue Steps to Final Cleanup

- n Complete investigation of extent of on-site/off-site contamination
- n Test, evaluate and compare cleanup technologies
- n PPG submits plans for NJDEP consideration - Fall 2011, followed by:
  - n Independent Technical Consultant review
  - n Jersey City and Developer review
  - n Community review
- n DEP selects final cleanup measure(s) - Early 2012
- n Full-scale cleanup proceeds - Spring 2012

# How to Reach Us

n Phone: 201-777-2099

n E-mail: [Info@chromecleanup.com](mailto:Info@chromecleanup.com)

n Mail: Chromium Cleanup Partnership  
P.O. Box 15981  
Jersey City, N.J. 07305

n Visit: PPG's Garfield Avenue Renewal Company  
334 Martin Luther King Drive  
Tuesdays and Thursdays 10 a.m. - 2 p.m.