

# **Garfield Avenue Cleanup Status Report Public Meeting**

**March 21, 2013  
6:30 p.m.**

**Fred W. Martin  
Center for the Arts  
Jersey City, N.J.**

**Chromium Cleanup**  
Partnership

N.J. DEPARTMENT OF ENVIRONMENTAL PROTECTION  
CITY OF JERSEY CITY  
PPG INDUSTRIES  
COURT-APPOINTED SITE ADMINISTRATOR

# Meeting Overview

- **Welcome / Introduction**
- **2009 Settlement Review / Revised Master Schedule**
- **Garfield Avenue Cleanup Activity To Date**
  - Berry Lane Park Cleanup
  - Garfield Avenue Main Site
  - Coal Tar Waste Cleanup
- **What's Next?**
- **Blood Results / Air Quality**
- **Residential Inspection Program**
- **General Q&A / Open Information Session**

# Welcome / Introduction

- **Remarks - Deputy Mayor Tayari**
- **Program Format**
- **Introduction of Presenters**
- **Presentation led by independent Site Administrator**  
**Mike McCabe**

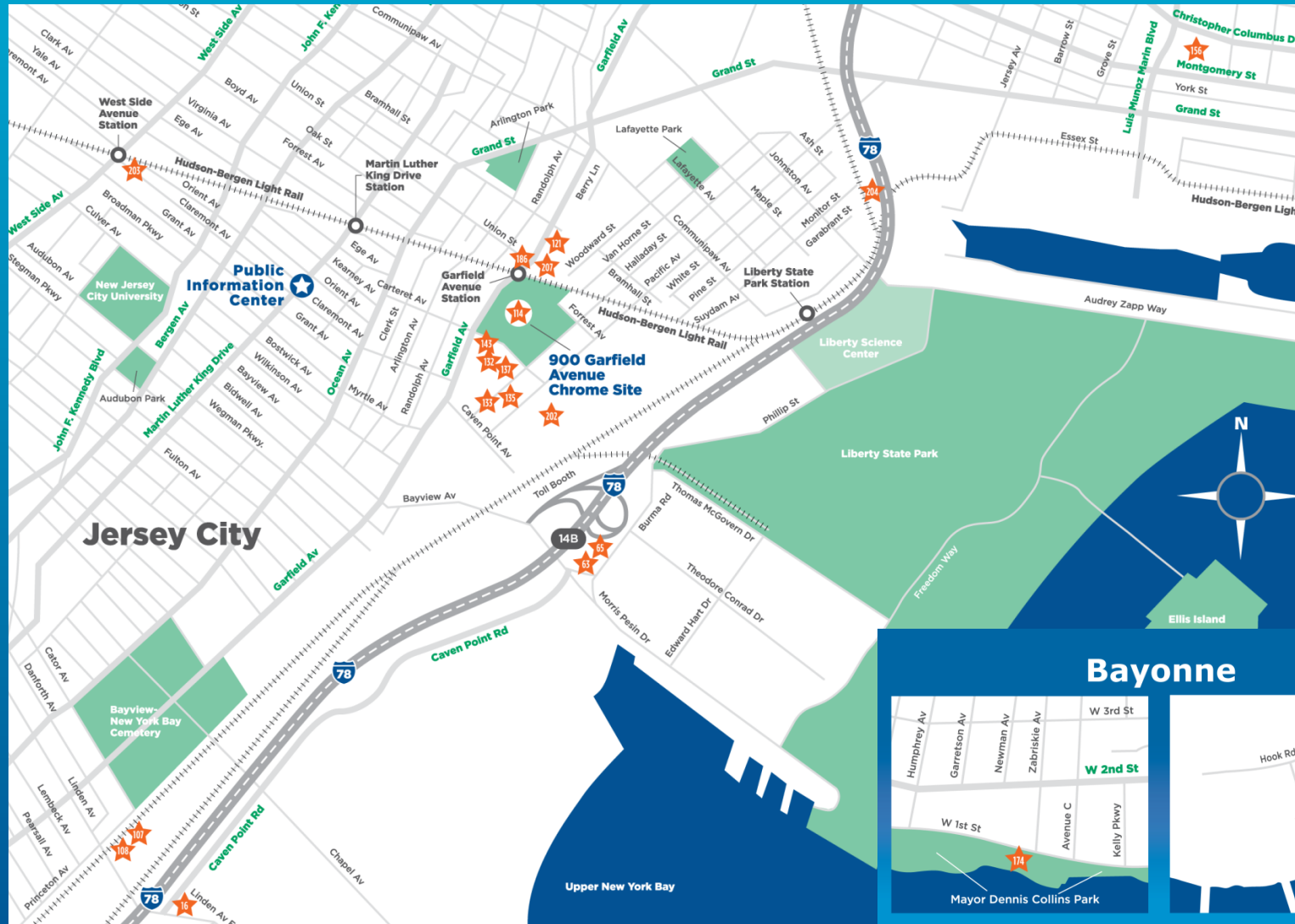
# Settlement Overview

- On June 26, 2009, DEP, Jersey City and PPG signed a settlement in Superior Court where they agreed to work together to clean up PPG's chromium sites in Hudson County
- The agreement:
  - Established a 5-year goal to clean up all 20 PPG sites with special emphasis on the former chrome ore processing plant and surrounding sites on Garfield Avenue
  - Required sites to be remediated in accordance with the DEP Commissioner's Chromium Policy and "Applicable Remedial Provisions"
  - Required sites to be remediated to permit redevelopment consistent with Jersey City's redevelopment plan
  - Required a "judicially enforceable" Master Schedule be developed to prioritize site cleanups within the 5-year goal

# Settlement Overview

- **The agreement (continued):**
  - **Created new position of an independent, court-appointed Site Administrator with responsibility to develop a Master Schedule and to facilitate cleanup-related activities among the parties**
  - **Created new position of an independent Technical Consultant to assist Site Administrator and provide technical review and work plan evaluation in support of DEP regulatory responsibilities**

# 20 Cleanup Locations

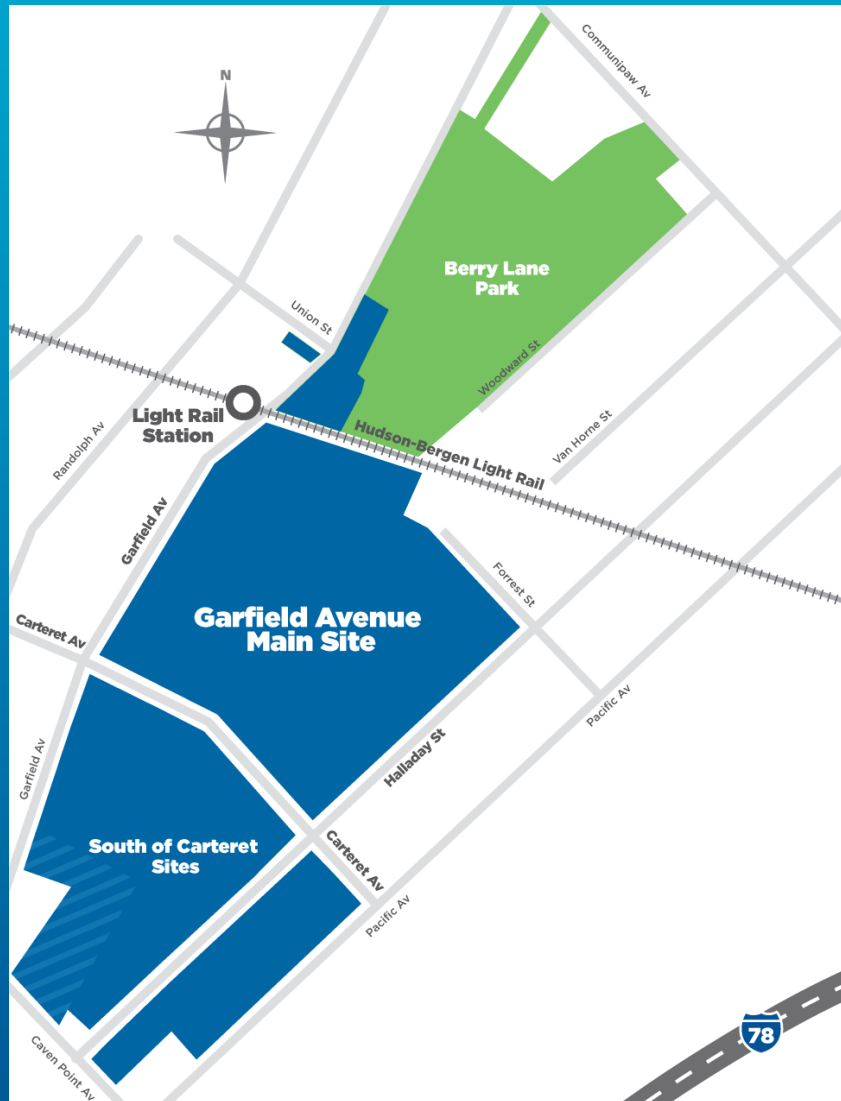


**Chromium Cleanup**  
Partnership

# Master Schedule

- Initial Schedule submitted to Court with December 1, 2009 Start Date / December 31, 2014 Completion Date
- Main Garfield Avenue site (114) cleanup encountered a number of delays, including:
  - Technical issues, requiring additional review;
  - Permitting issues, requiring additional submissions;
  - Property ownership and control issues;
  - Coordination and planning for coal tar waste site;
  - Erosion along Carteret Avenue, requiring assessment, redesign and repair;
  - Sandy-related slowdown
- Cleanup of sites south of Carteret delayed because of property access and ownership issues
- Following action by DEP, a revised schedule was entered into court in February with ambitious plan to meet completion goal

# Garfield Avenue and Berry Lane



**Chromium Cleanup**  
Partnership

# Garfield Avenue and Berry Lane



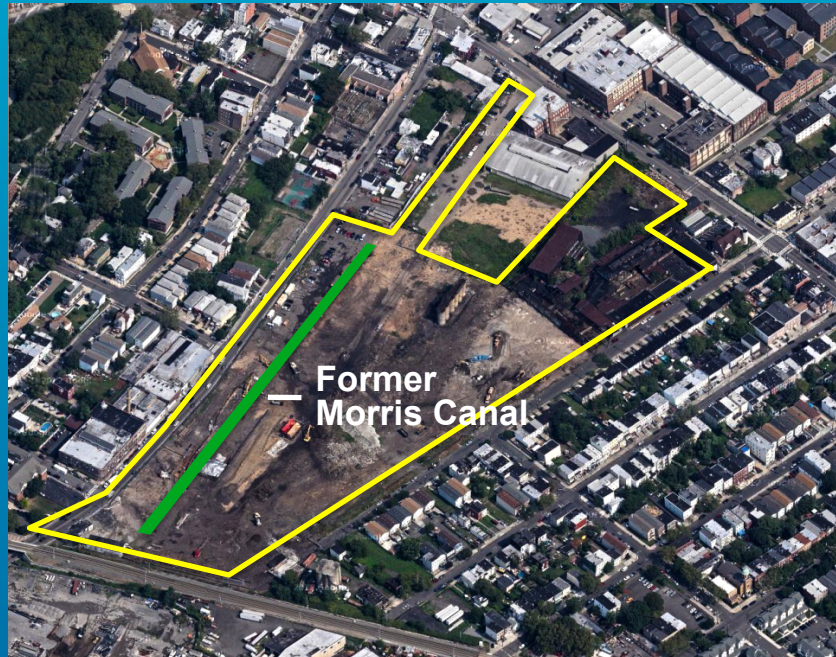
# Berry Lane Park

## Chromium waste completely removed



Phase I construction includes: site remediation, demolition, drainage structure installation, grading and ballpark construction

# Berry Lane Park



- **DEP-approved Remedial Action Work Plan for all cleanups**
- **Full removal of all chrome waste and soils to DEP standard**
- **A total of 49,095 tons of chrome material was excavated from the site**
- **PPG reimbursed JCRA for costs of chromium removal**
- **One mobilization to address all contaminants**



**Chromium Cleanup**  
Partnership



**Chromium Cleanup**  
Partnership



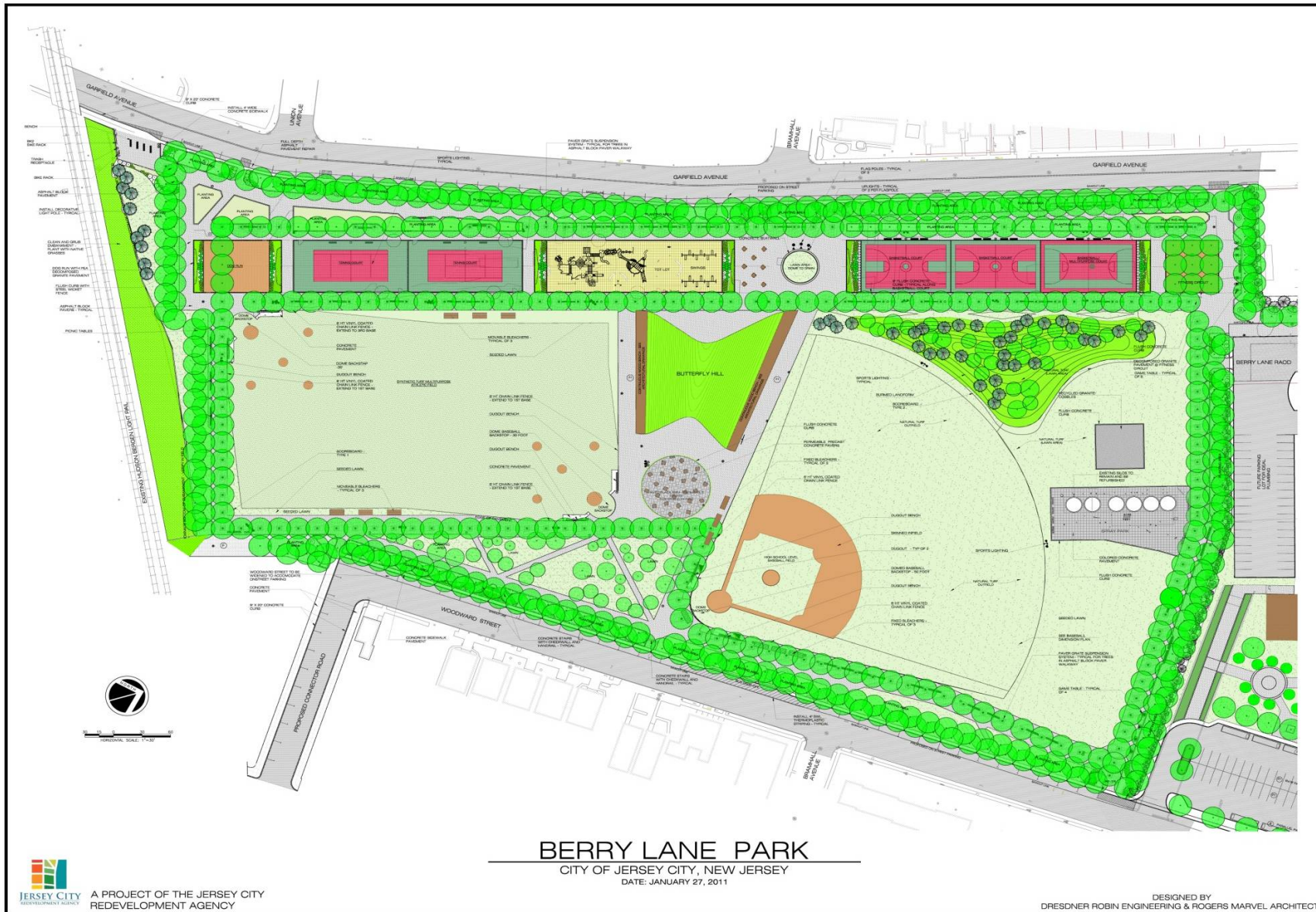
**Chromium Cleanup**  
Partnership



**Chromium Cleanup**  
Partnership



**Chromium Cleanup**  
Partnership



**Chromium Cleanup**  
Partnership

# Main Garfield Avenue Site

## 1/3 Cleanup to Date

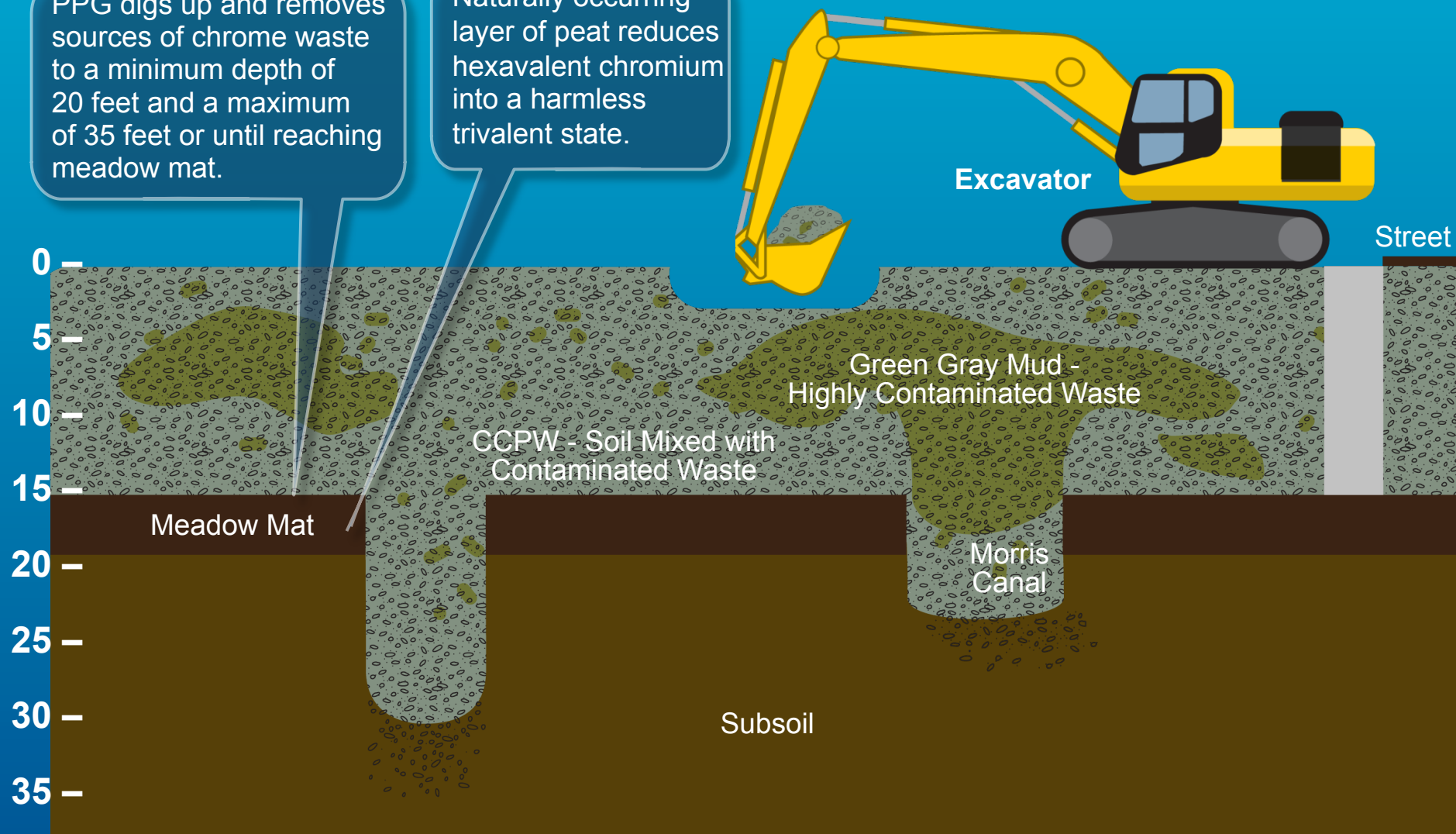


- Dark green area shows cleanup activity where 1/3 of chrome waste has been removed
- 202,000 tons of material removed, including highly contaminated “Green-gray mud”
- Backfilled with clean fill
- Cleanup meets or exceeds DEP environmental standards

# Garfield Avenue Excavation Process

PPG digs up and removes sources of chrome waste to a minimum depth of 20 feet and a maximum of 35 feet or until reaching meadow mat.

Naturally occurring layer of peat reduces hexavalent chromium into a harmless trivalent state.



# Garfield Avenue Excavation Process

PPG replaces excavated waste with clean fill.



Barrier Wall

0  
5  
10  
15  
20  
25  
30  
35

Clean Fill

Meadow Mat

Morris Canal

Subsoil

**Chromium Cleanup**  
Partnership

# Water Treatment System



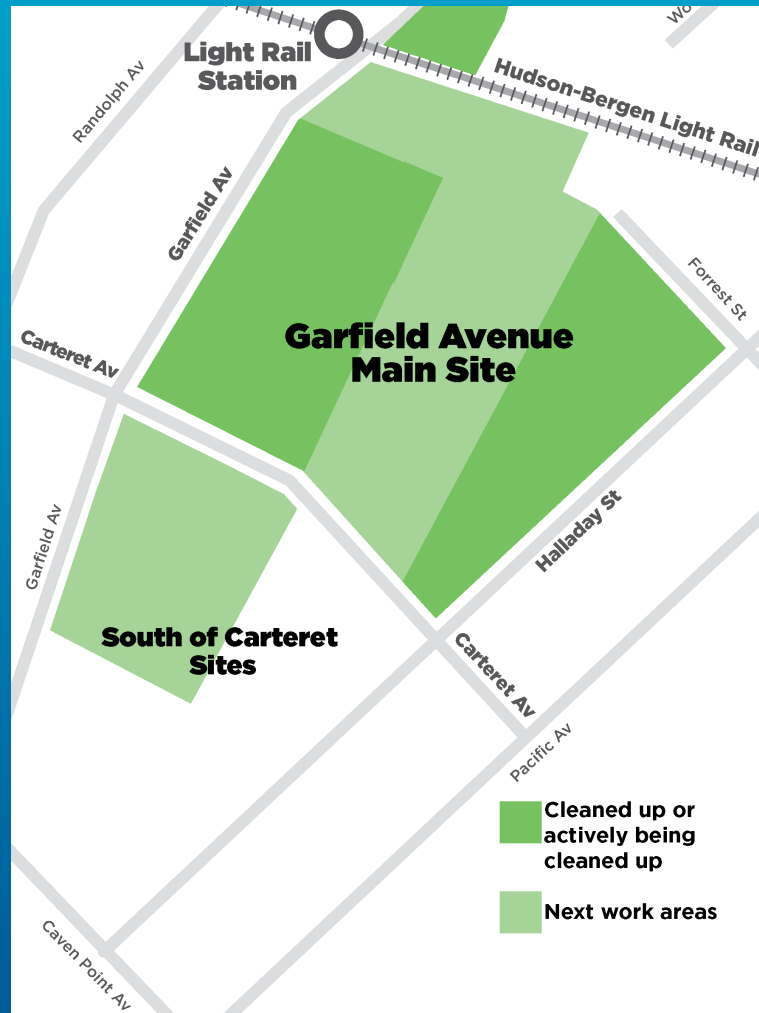
- Water treatment plant decontaminates water on site and reduces high volume of groundwater
- More than 13 million gallons decontaminated and piped to sewer system under required permits

# Former Manufactured Gas Plant PSE&G / PPG Coordinated Cleanup



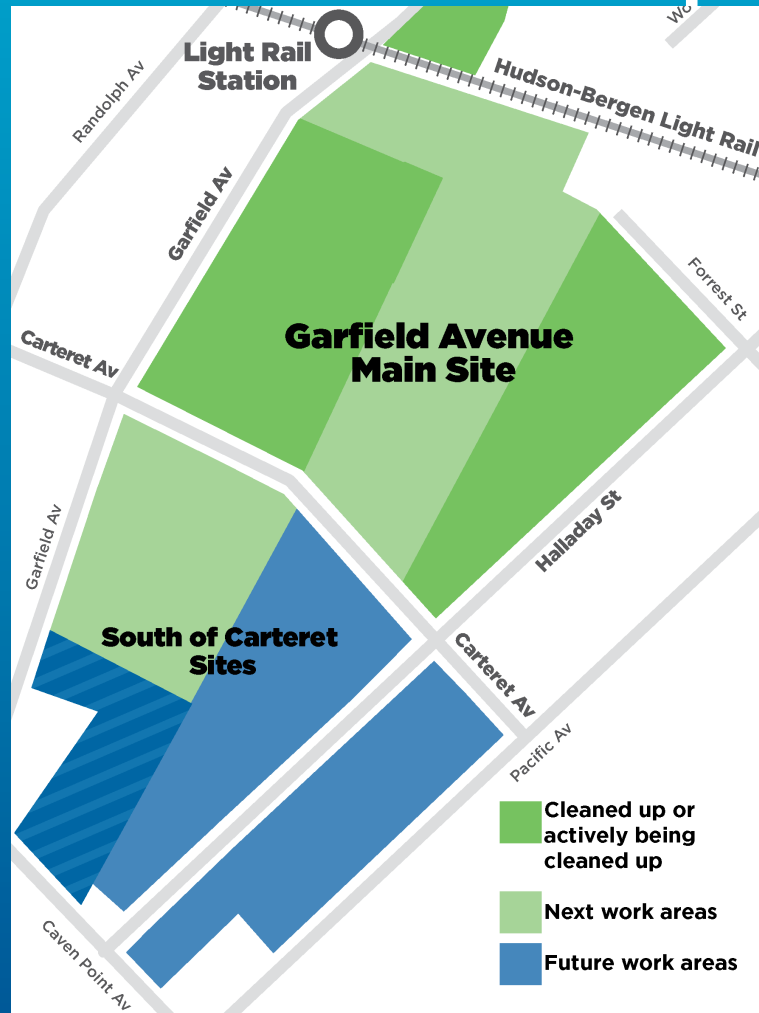
- Rich Blackman, P.E.  
Project Manager  
PSE&G

# Next Steps: Cleanup Moving Forward



- Work continues in dark green areas
- Light green areas are being prepared within weeks for next phase of cleanup
- Area closest to light rail line will start first
- Building demolition planned at corner of Garfield and Carteret
- Multiple crews will be at work throughout site

# Next Steps: Cleanup Pending Resolution of Property Issues



- Areas in dark blue south of Carteret Avenue are subjects of ongoing negotiations over property access and acquisition
- Property issues need to be resolved before clean up can begin

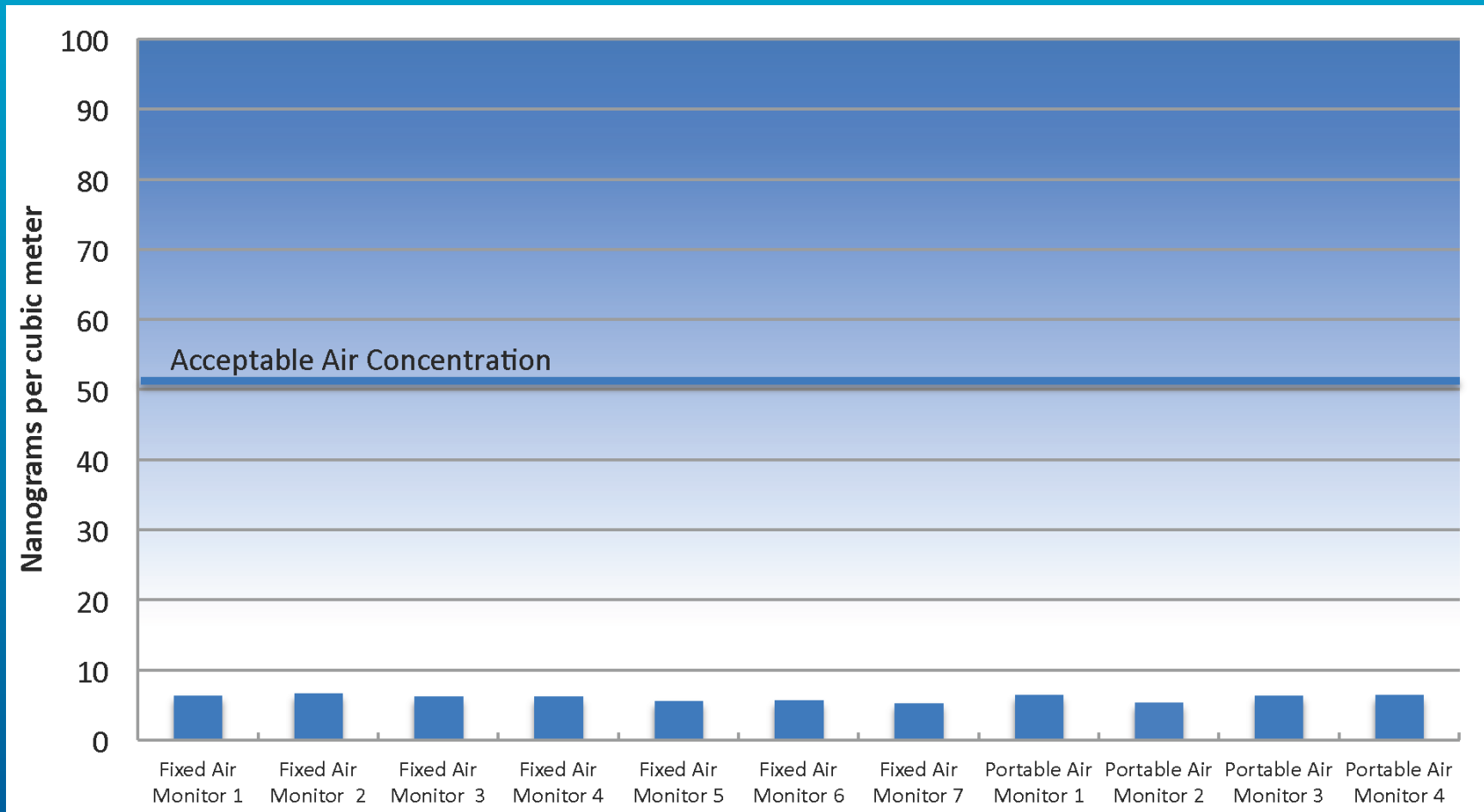
# **Exposure Prevention/Air Monitoring**

## **Hex chrome remains below DEP limits**

- **Dust and hexavalent chromium levels stayed well below DEP-approved air-quality limits**
  - **Air monitoring conducted 24/7**
  - **Two full-time air monitoring technicians on-site**
- **Multiple prevention and protection plans**
  - **Dust Control – Continuous Management and Rapid Response Suppression**
  - **Air Monitoring – Independent Verification**
  - **Traffic Safety and Control**
  - **Site Health & Safety**

# Cleanup to Date Average Concentrations

Hexavalent chromium



# **Blood Tests Round #3**

## **No hex chrome changes due to cleanup**

- **Third round of blood samples were taken from 30 residents living near the Garfield Avenue site who had previously participated**
- **As in Round #2, results showed no changes in blood that would indicate exposure to contaminated waste, despite increased excavation activity**
- **Exposure no different from other urban areas without chromium sites**
- **Samples analyzed by independent, certified lab**
- **Program administered by EOHSI**
- **Round #4 blood tests for existing participants will start in late spring**

# Residential Inspection Program

No chromium waste found to date

- Residents of specific areas can have their property inspected for the presence of chromium
- If found above health action levels, contamination will need to be cleaned up
- No cost to property owner, PPG pays
- 74 eligible properties have been examined under the program to the owners' satisfaction
- PPG has voluntarily remediated one property and is working on a second where low levels of chromium were found but are not attributed to PPG operations

# Public Information Center



- Located at 90 Forrest St.
- Hours are 10 a.m. to 2 p.m. Tuesdays and Thursdays, and by appointment
- Contains maps and other documents about cleanup sites

# Q&A

# How to Reach Us

- Phone: 201-777-2099
- E-mail: [Info@chromecleanup.com](mailto:Info@chromecleanup.com)
- Mail: Chromium Cleanup Partnership  
P.O. Box 15981  
Jersey City, N.J. 07305